

Historic, archived document

Do not assume content reflects current scientific knowledge, policies, or practices.



WASHINGTON'S OLDEST, LARGEST NURSERY

Columbia & Kanogan

NURSERY COMPANY

THE WENATCHEE NURSERIES

WENATCHEE, WASHINGTON

Condensed Catalog

AND

PRICE LIST

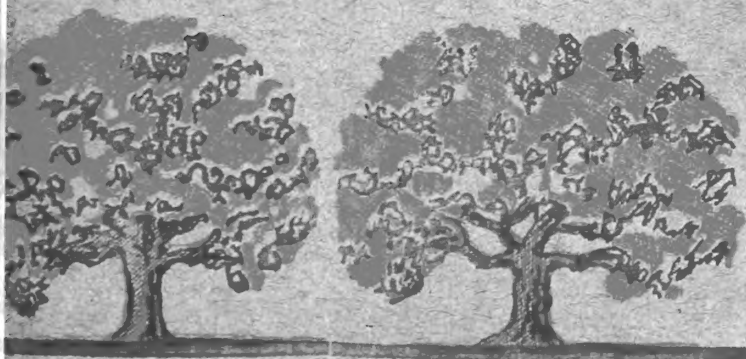
FALL 1940

...

SPRING 1941

35th YEAR

300 ACRES



GENERAL INFORMATION

Shipping Season — Our shipping season begins about October 25th and continues until late spring. Where planting conditions are favorable, and if customers request, we can make shipments in mid-winter.

Planting Instructions — Planting instructions are given on the back of a shipping tag attached to every box or bale.

Parcel Post Shipments — It is sometimes necessary to cut back tops of trees to comply with parcel post regulations for maximum measurement of parcels. This does not injure the trees, as tops should be pruned back when planting.

WE PAY FREIGHT AND SHIPPING CHARGES

(Except As Noted)

We pay freight charges (except on Evergreens and certain other items as specified in our price list) to any shipping point within the United States.

Small shipments \$3.00 or over we pay express or mail charges (except Evergreens and other items noted) to points in the Pacific Northwest, and one-half the Express or Mail charges to points elsewhere in the United States.

PRICES SUBJECT TO CHANGE WITHOUT NOTICE.

Sales Tax — If you live in the State of Washington, add 2 per cent Sales Tax on all Flowering Shrubs, Roses, Evergreens, Shade Trees, or other Landscape Material. No tax on Fruit Trees.

NUMBER OF TREES OR PLANTS REQUIRED PER

ACRE — HOW TO ESTIMATE

Rule — Divide 43,560 (the number of square feet in an acre) by the number of square feet for each plant. The result is the number of trees or plants required for an acre.

Example — (Square system) Trees 20 by 25 feet apart: Multiply 20 by 25, equals 500 square feet; 43,560 divided by 500, equals 87 trees per acre.

If trees are planted on the Triangular system, 15 per cent more than for the Square system will be required.

Strawberries — Field culture: 1 to 1½ by 2½ to 3½ feet. Garden culture: 1 to 2 feet.

USUAL DISTANCES FOR PLANTING

Apple	25 to 35 feet apart
Pear	20 to 35 feet apart
Sweet Cherry	25 to 40 feet apart
Sour Cherry.....	} 16 to 24 feet apart
Plum.....	
Prune.....	
Apricot.....	
Peach.....	
Grapes	7 to 10 feet apart
Currants	4 to 6 feet apart
Gooseberries	4 to 6 feet apart
Raspberries.....	3 to 4 ft. x 5 to 7 ft.
Blackberries	3 to 4 ft. x 5 to 7 ft.
Boysenberries.....	} 7 x 7 or 7 x 8 ft.
Loganberries.....	
Youngberries.....	

GUARANTEE

WE GUARANTEE all nursery stock sold by us to be true to name, otherwise we will replace free or refund the purchase price, at the option of the purchaser.

We guarantee all stock to be free from insect pests or plant disease.

We guarantee all nursery stock shipped by us to be of first quality and in good, live, growing condition when it reaches you.

Our stock is carefully handled, has good vitality, and under ordinary conditions will grow. However, any complaint about failure to start growth must be made in writing, direct to our office, within thirty days after planting.



C. & O. Building, Second and Mission Sts., Wenatchee
Display Grounds and Sales Room

QUANTITY DISCOUNTS on Fruit Trees:

1,000 Fruit Trees take 10% discount from per 100 prices.
500 Fruit Trees take 5% discount from per 100 prices.

SPECIAL PRICES ON LARGER QUANTITIES

Note: The quantity rate on fruit trees applies to the total number of trees ordered. Example: 6 Apple, 4 Peach, 2 Pear would take the "Dozen Rate." 25 Apple, 25 Pear would take the "Fifty Rate," etc.

DISCOUNTS FOR ALL CASH WITH ORDER

This discount offer applies to orders given at least 30 days before shipping date.

Orders up to \$50.00, where **ALL CASH** is paid with the order — 10% of the amount paid will be given in additional free stock. This free stock may include any varieties in our line except seeds, fertilizer, patented Roses, and Evergreens.

Orders over \$50.00: Cash Discount for all cash with order is as follows — Stock sold at 100 rate, 5%; at the 500 rate, 3%; at the 1,000 rate, 2%.

"Better Varieties" PAY!

MR. JAY PERRY of the Yakima Valley writes:

"Year after year my Redelberta peaches have averaged better than 50 per cent more money — and the entire crop shipped and sold before common Elbertas started."

NOTE:—Mr. Perry's 1940 crop of REDELBERTAS sold for \$40.00 per ton . . . compared with \$25.00 per ton for ordinary Elberta — approximately \$130 MORE PROFIT PER ACRE from REDELBERTAS!

Fruit Trees are listed in order of ripening season.

APPLES

Varieties marked with an asterisk (*), do well west of the Cascade mountains. All fruit trees listed in order of ripening.

APPLES (Common Varieties)

Size —	Each	Dozen	25	50	100
		Lots	Lots	Lots	Lots
		Each	Each	Each	Each
3 to 4 foot.....	\$.60	\$.50	\$.40	\$.35	\$.30
4 to 6 foot.....	.70	.55	.45	.40	.35
{ 5 to 7 foot.....	.75	.60	.50	.45	.40
} Extra Select Grade.					

*SeeandO Red Rome — Trade Mark Reg.

*SeeandO Winesap — Trade Mark Reg.

Size —	Each	Dozen	25	50	100
		Lots	Lots	Lots	Lots
		Each	Each	Each	Each
3 to 4 foot.....	\$.75	\$.60	\$.50	\$.40	\$.35
4 to 6 foot.....	.80	.65	.55	.45	.40
{ 5 to 7 foot.....	.85	.70	.60	.50	.45
} Extra Select Grade.					

* Trade Marked & Plant Patented Varieties Take Following Prices

Richard Delicious — Trade Mark Reg.

Shotwell Delicious — Plant Pat. No. 90.

Blackjon — Trade Mark Reg.

Blaxtayman — Trade Mark Reg.

Blackmack — Trade Mark Reg.

Size —	Each	Dozen	25	50	100
		Lots	Lots	Lots	Lots
		Each	Each	Each	Each
3 to 4 foot.....	\$.80	\$.65	\$.50	\$.45	\$.40
4 to 6 foot.....	.85	.70	.55	.50	.45
{ 5 to 7 foot.....	.90	.75	.60	.55	.50
} Extra Select Grade.					

* Trade Marked and Patented varieties take special prices

SUMMER VARIETIES

***Crimson Beauty** — Very best early apple. Ripens week earlier than Yellow Transparent — has sold for double the price; flaming red, good quality and size. TREE very hardy, vigorous, bears young, produces heavy annual crop.

***Yellow Transparent** — Medium, clear pale yellow, waxen, tart, unexcelled for apple sauce.

***Early Harvest** — Medium, pale yellow, fine flavor, dessert and cooking.

Red June (Wilson's) — Medium, brilliant red, tart and juicy.

FALL VARIETIES

***Red Duchess** — Bud sport of Duchess, dark red, more color than Duchess, stands up well when baked.

***Red Gravenstein** — Large, bright red, excellent quality, originated as a bud sport from common Gravenstein.

***Gravenstein** — Large, yellow striped red, tender, juicy, highly flavored.

***Wealthy** — Large, bright red, tart, very good.

***Wagner** — Medium, deep red, high flavor, juicy.

Snow (Fameuse) — Medium to small, deep red striped, tart, good dessert.

APPLES — (Continued)

WINTER VARIETIES

Trade Marked and Patented varieties take special prices

- ***Winter Banana** — Large, clear waxy yellow with blush, tart flavor, good cooking.
- ***McIntosh Red** — Large, bright red, striped, white flesh, excellent, very aromatic, dessert and cooking. Good pollinizer for Richared, Shotwell, common Delicious.
- ***Blackmack (T. M. Reg.)** — Sport of McIntosh Red and a more profitable variety.
- Jonathan** — Medium, red striped, rich flavor, unexcelled for pies, good dessert.
- Blackjon (T. M. Reg.)** — A bud sport or mutation of Jonathan, earlier and more color, deep red.
- Delicious (Red or Common)** — Large, red, striped, excellent flavor, fragrant aroma, fine eating, best for salads.
- Richared (T. M. Reg.) Delicious** — Probably the best known bud sport or mutation of the Delicious.
- ***Shotwell Delicious (U. S. Plant Pat. No. 90)** — Another improved Delicious; colors earlier and darker than Richared.
- Yellow Delicious** — Resembles Grimes Golden somewhat in shape, color and quality. Excellent cooker, fine dessert.
- Spokane Beauty** — Largest apple grown.
- ***Northern Spy** — Large, yellow striped with red, rich and juicy. Old favorite in north and New England.
- Golden Russet** — Medium, dull russet, juicy and highly flavored.
- ***King** — Very large, yellow, splashed with crimson, excellent dessert, good baker.
- Rome Beauty** — Large, yellow, striped with red, fine, juicy, unexcelled for baking.
- Secando (T. M. Reg.) Red Rome** — Darker color than Rome Beauty. Nearly all color Extra Fancy grade.
- Chelan** — Large, golden, winter apple, excellent dessert and cooking, long keeper.
- Spitzenberg** — Medium to large, deep red, excellent flavor, an old favorite.
- White Winter Pearmain** — Large, pale yellow, fine flavor.
- Newtown Pippin (Yellow Newtown)** — Medium to large, light yellow, excellent for both dessert and cooking.
- Stayman Winesap** — Large, striped and splashed with dark crimson, splendid quality, heavy bearer.
- Blaxtayman (T.M. Reg.)** — New all-red Stayman Winesap.
- Winesap (Common)** — Medium, dark red, good keeper and producer.
- Secando (T. M. Reg.) Winesap** — An improved all-red Winesap.

CRAB APPLES

- ***Transcendent** — Large, red and yellow striped, good eating and cooking.
- ***Hyslop** — Large, dark red, or purplish, good keeper.
- ***Whitney No. 20** — Large, glossy, striped with carmine, juicy, pleasant flavor.

PEARS

Varieties marked with an asterisk (*) do well west of the Cascade mountains in Washington and Oregon. Pears are listed in their order of ripening.

Size —	Each	Dozen Lots Each	25 Lots Each	50 Lots Each	100 Lots Each
3 to 4 foot.....	\$.70	\$.55	\$.45	\$.35	\$.30
4 to 6 foot.....	.75	.60	.50	.40	.35
{ 5 to 7 foot.....	.85	.65	.55	.45	.40
} Extra Select Grade.					

***Sugar** — Small, light yellow, sweet, good.

***Bartlett** — Large, clear yellow, sometimes slightly blushed, occasionally flecked with russet. Juicy, buttery, dessert, cooking and canning.

***Flemish Beauty** — Large, green to yellow, red cheeked, juicy, rich, very productive.

Gorham — Of Bartlett type, same high quality and attractive appearance. Ripens two weeks later than Bartlett, keeps month longer. Good quality, rich flavor, good canner.

***Beurre D'Anou ("Anjou")** — A firm pear, rather large, flesh yellowish white, rich buttery flavor, good keeper. One of the leading commercial pears.

Cayuga — Average large as Bartlett with delectable flavor, shape and color of Seckel.

***Doyenne Du Comice** — Large, yellowish red, rich, juicy.

***Seckel** — Small, brownish green, red cheek, sweet, juicy, excellent.

***Beurre Bosc** — Large, cinnamon russet, long neck, juicy, excellent.

***Kieffer** — Large, golden yellow, hardy, blight resistant. Vigorous and fruitful.

***Winter Nellis** — Medium size, yellow covered with russet, very fine, good producer.

***Old Home** — Blight resistant; good for top working to other varieties.

APRICOTS

Riland Apricot — Plant Patent No. 74.

Size —	Each	Dozen Lots Each	25 Lots Each	50 Lots Each	100 Lots Each
3 to 4 foot.....	\$.80	\$.65	\$.50	\$.45	\$.40
4 to 6 foot.....	.85	.70	.55	.50	.45
{ 5 to 7 foot.....	.90	.75	.60	.55	.50
} Extra Select Grade.					

Riland (U. S. Plant Pat. No. 74) — The only "patented" apricot. Discovered and introduced by "C. & O." The earliest commercial apricot. Excellent shipper, good canner; brings top prices.

APRICOTS (Common Varieties)

Size —	Each	Dozen Lots Each	25 Lots Each	50 Lots Each	100 Lots Each
3 to 4 foot.....	\$.60	\$.50	\$.40	\$.35	\$.30
4 to 6 foot.....	.70	.55	.45	.40	.35
5 to 7 foot.....	.75	.60	.50	.45	.40
} Extra Select Grade.					

Riland — See description, Page 4.

Yakimene (Acme) — A Japanese apricot. Large, early, handsome, distinctive flavor. Excellent dessert.

Phelps — Large, ripens week ahead Wenatchee, good shipper.

Wenatchee — Very large; leading apricot of Wenatchee valley, Washington. Very productive — a desert apricot. (Formerly called Wenatchee Moorpark.)

Royal — Medium size — dull yellow with orange cheek — good canner and dryer.

Blenheim — Medium size, oval, deep yellow. Good canner — productive — excellent quality.

Tilton — Larger than Blenheim, oval — fine flavor. Considered one of the best commercial canners.

Moorpark — Large, but not as large as Wenatchee — deep yellow blushed with red. A standard variety — good canner.

J. L. Budd — A small Russian apricot — very hardy, will grow where other apricots fail. Delicious kernel.

CHERRIES

SWEET CHERRIES

Size —	Each	Dozen Lots Each	25 Lots Each	50 Lots Each	100 Lots Each
3 to 4 foot.....	\$.70	\$.60	\$.50	\$.45	\$.40
4 to 6 foot.....	.75	.65	.55	.50	.45
5 to 7 foot.....	.80	.70	.60	.55	.50
} Extra Select Grade.					

Black Tartarian — Large, purplish black, juicy and rich, certified pollenizer.

Royal Ann — Large, pale yellow with red cheek, firm juicy and sweet. In demand by canneries.

Centennial — Large, yellow, certified pollenizer.

Long Stem Waterhouse — Medium; resembles Royal Ann; certified pollenizer.

Deacon — Black, resembles Bing, not quite as large, very resistant to cracking. Certified pollenizer.

Bing — Large, black, fine flavor, good shipper.

Black Republican — Large, shining black, good keeper and shipper, certified pollenizer.

Lambert — Large, dark purplish black, sweet, rich, fine flavor.

SOUR CHERRIES

Size —	Each	Dozen Lots Each	25 Lots Each	50 Lots Each	100 Lots Each
3 foot, up.....	\$.70	\$.60	\$.50	\$.45	\$.40
3½ to 5 foot.....	.75	.65	.55	.50	.45
4 to 6 foot.....	.80	.70	.60	.55	.50
} Extra Select Grade.					

Early Richmond — Medium size, dark red, acid.

May Duke — Large, red, juicy and rich.

Montmorency — Large, red, "the kind the canneries want."

Late Duke — Large, light red, late and fine.

English Morello — Large, dark red, rich, juicy, acid, good canner.

PEACHES

Varieties listed in order of ripening. "F" denotes freestone; "C" clingstone; "S. C." semi-cling.

PEACHES — (Common Varieties)

Size —	Each	Dozen Lots Each	25 Lots Each	50 Lots Each	100 Lots Each
3 to 4 foot.....	\$.60	\$.50	\$.40	\$.35	\$.30
4 to 6 foot.....	.70	.55	.45	.40	.35
{ 5 to 7 foot.....	.75	.60	.50	.45	.40
{ Extra Select Grade.					

(Trade Marked & Plant Patented Varieties Take Following Prices)

Candoka Peach — Plant Patent No. 51.
 Herb Hale — Plant Patent Pending.
 Redelberta Peach — Plant Patent No. 232.
 Rio Oso Gem Peach — Plant Patent No. 80.

Size —	Each	Dozen Lots Each	25 Lots Each	50 Lots Each	100 Lots Each
3 to 4 foot.....	\$.85	\$.70	\$.55	\$.45	\$.40
4 to 6 foot.....	.90	.75	.60	.50	.45
{ 5 to 7 foot.....	.95	.80	.65	.55	.50
{ Extra Select Grade.					

***May Flower, S. C.** — Earliest of all peaches, medium, red, white flesh.

Hale's Early, S. C. — Medium, greenish white with red cheek. Good quality.

***Golden Jubilee, F.** — The earliest good yellow freestone.

***Triumph, F.** — Large, dark orange yellow.

Arp. Beauty, F. — Large, yellow with blush — delicious.

***Rochester, F.** — Very hardy, thrifty grower. Medium size, deep yellow and red, excellent quality. Especially good west of the Cascade mountains.

Valiant, F. — Resembles Elberta but more globular in shape and of better quality. Considered best canner in Ontario, Canada. Season just after Vedette.

Herb Hale (U. S. Plant Pat. Pending; Trade Mark Pending), F. — New, early shipping peach of outstanding quality. Originated in H. W. Donahey orchard, Yakima valley. Large size, excellent quality, yellow meated, free-stone, ripens right after Rochester.

Slappy, F. — Large, deep yellow — excellent home canner.

Early Crawford, F. — Large, yellow — good quality. A good home garden peach.

***Champion, F.** — White-fleshed peach. Firm, sweet, delicious flavor. Tree hardy, and good bearer.

Hale Haven, F. — More color than South Haven and more free at pit. Thicker skin. Season same. Not quite as hardy as South Haven.

Veteran, F. — Elberta type peach. Tree vigorous grower early production. Season just after Valiant.

Redelberta (U. S. Plant Pat. No. 232) F. — A bud sport of the Elberta. A true Elberta in all respects except that it matures about 10 days earlier and has double the red color.

Early Elberta, F. — Large, golden yellow — excellent quality, good shipper.

Tuscan Cling, C. — Very large, earliest cling, canner.

Elberta, F. — Very large, bright yellow — good shipper.

J. H. Hale, F. — Very large, golden yellow — fine shipper. The commercial peach by which all other peaches are measured for standards of excellency.

Candoka (U. S. Plant Pat. No. 51) F. — The "fuzzless" peach.

Late Crawford, F. — Very large, yellow with dark red cheek.

Indian Blood, C. — Large, red flesh, ideal for pickling and preserving.

PEACHES — (Continued)

- Phillips Cling, C.**— Large, yellow, small pit, fine commercial canner.
Simmons, F.— Large, firm, good late variety.
Miller Cling, C.— Large, good flavor, excellent for home canning.
Rio Oso Gem, F. (U. S. Plant Pat. No. 89)— Best late variety.
October Krummel, F.— Large size, deep yellow, colored carmine. One of the very latest ripening varieties.

NECTARINES

The tree of the Nectarine to all appearances can be called a peach tree. In growth, habit, and soils required it is similar to the peach. The fruit differs from the peach in that the skin is smooth, and the rich, aromatic flesh has a flavor all its own. The Nectarine is an exceedingly delicious dessert fruit.

NECTARINES -- Same Price as Plums.

- Boston Red** — Large size — deep yellow with bright blush, sweet.
Quetta — Large, yellow green, rich, delightful aroma, excellent quality.

PLUMS

Asterisk (*) denotes varieties which do well west of the Cascade mountains. Varieties listed in order of ripening

Size —	Each	Dozen Lots Each	25 Lots Each	50 Lots Each	100 Lots Each
3 to 4 foot.....	\$.60	\$.50	\$.40	\$.35	\$.30
4 to 6 foot.....	.70	.55	.45	.40	.35
{ 5 to 7 foot.....	.75	.60	.50	.45	.40
} Extra Select Grade.					

- Beauty** — Similar in quality and appearance to Climax, two weeks earlier. Excellent pollenizer for Santa Rosa.
Climax — Very large, heart-shaped, deep red, good shipper.
***Yellow Egg** — Large, egg-shaped, yellow, good canner.
Burbank — Large, cherry red, mottled with yellow, sweet, good shipper.
Maynard — Very large, nearly round, dull red, sweet.
Santa Rosa — One of the largest, most beautiful, of all cling plums. Dark crimson, almost round, excellent shipper.
Simoni — Shape and color like tomato.
***Yakima** — Very large, egg-shaped, red, good shipper.
***Peach Plum** — Very large, roundish, purple. Excellent for eating fresh.
Wild Plum — This is the popular old wild plum native to the Mid-West and East. Round, bright red. Famous for jams and plum butter.
***Damsion** — Small, roundish oval, dark purple, fine canner.
***Imperial Gage** — Small, round, greenish yellow, good canner.
President — Late ripening shipping variety, popular and profitable. Fruit large, dark blue, flesh yellow.
Duart — Japanese blood plum, juicy, sweet, red flesh, earlier, hardier and better than Satsuma.
Satsuma — Large, nearly round, dark red flesh, small pit.

PRUNES

Asterisk (*) denotes varieties which do well west of the Cascade mountains.

Varieties listed in order of ripening.

Size —	Each	Dozen Lots Each	25 Lots Each	50 Lots Each	100 Lots Each
3 to 4 foot.....	\$.60	\$.50	\$.40	\$.35	\$.30
4 to 6 foot.....	.70	.55	.45	.40	.35
5 to 7 foot.....	.75	.60	.50	.45	.40

Extra Select Grade,
Early Italian and Weatherspoon (add 5c per tree to above price)

***Early Italian** — Resembles Italian, slightly larger and sweeter. Two weeks earlier. Good commercial variety. Origin: A bud sport of the Italian.

***Sugar** — Very large, oval, dark purple, tender, sweet; particularly fine for home drying and canning. Contains almost 24 per cent sugar.

***Hungarian** — Very large, dark red, juicy and sweet. Its bright color, productiveness and shipping qualities make it profitable for home or market.

***Petite (French)** — Medium size, egg-shaped, purple, very sweet and fine.

***Double X French** — Larger than Petite.

***Italian** — Medium size, oval tapering at both ends; dark purple, flesh greenish yellow; separates freely from pit; excellent for eating fresh, and the best for drying.

QUINCES

Size —	Each	Dozen Lots Each	25 Lots Each	50 Lots Each	100 Lots Each
3 to 4 foot.....	\$.85	\$.65	\$.50	\$.45	\$.40
4 to 6 foot.....	1.00	.85	.60	.55	.50

Orange — Large, roundish, bright yellow, an old favorite, finest quality.

Pineapple — Very large, apple-shaped, flavor resembles pineapple, delightfully fragrant when fresh and delicious when cooked.

NUT TREES

ALMONDS

Size —	Each	Dozen Lots Each	25 Lots Each	50 Lots Each	100 Lots Each
3 to 4 foot.....	\$.85	\$.65	\$.50	\$.45	\$.40
4 to 6 foot.....	1.00	.85	.60	.55	.50

I. X. I. — Large, soft shell.

Nonpareil — Thin "paper-shell." Good cropper.

Texas Prolific — Popular variety, rather small nuts. Excellent pollenizer.

BUTTERNUT (White Walnut)

Size —	Each	Dozen
4 to 6 foot.....	\$1.50	\$15.00

NUT TREES — (Continued)

CHESTNUTS

American Sweet — Nuts rather small, trees hardy, prolific bearer.

Size —	Each	Dozen
4 to 6 foot.....	\$1.50	\$15.00
6 to 8 foot.....	1.75	17.50

Spanish — Handsome, round-headed tree. Not so sweet as American.

Size —	Each	Dozen
3 to 4 foot.....	\$1.50	\$15.00
4 to 6 foot.....	1.75	17.50

FILBERTS

Size —	Each	Dozen
2 to 3 foot.....	\$.75	\$ 7.50
3 to 4 foot.....	.85	8.50
4 to 6 foot.....	1.00	10.00

*Write for special prices in 100, 500 and 1,000 lots.

Barcelona — Large, round, comes free from husk. Pollinize with DuChilly, Daviana, or White Aveline.

DuChilly — Large, long nut, superior quality. Tree not so large as Barcelona, good bearer.

Daviana — Long type nut similar to DuChilly. Tree large grower. Excellent pollinizer for DuChilly and Barcelona.

White Aveline — Pollinizer.

ENGLISH WALNUT

Franquette — One of the best English Walnut varieties for the Northwest. Large, well-filled nuts.

Franquette not grafted

Size —	Each	Dozen
3 to 4 foot.....	\$1.00	\$10.00
4 to 6 foot.....	1.25	12.50
6 to 8 foot.....	1.50	15.00

Franquette grafted trees

Size —	Each	Dozen
3 to 4 foot.....	\$1.50	\$15.00
4 to 6 foot.....	2.00	20.00
6 to 8 foot.....	2.50	25.00

Secando — Local walnut developed from an old hardy tree. Thin-shelled, plump kernels.

Grafted trees

Size —	Each	Dozen
3 to 4 foot.....	\$2.00	\$20.00
4 to 6 foot.....	2.50	25.00
6 to 8 foot.....	3.00	30.00

Black Walnut, American (not grafted)

Size —	Each	Dozen
3 to 4 foot.....	\$1.00	\$10.00
4 to 6 foot.....	1.25	12.50
6 to 8 foot.....	1.50	15.00

BLACK WALNUTS — Named Varieties

Size —	Each	Dozen
3 to 4 foot.....	\$2.00	\$20.00
4 to 6 foot.....	2.50	25.00
6 to 8 foot.....	3.00	30.00

Thomas — One of the finest Black Walnuts. Kernels large, cracks easily. Grafted.

Stabler — Trees bear early, extremely hardy, nuts of excellent cracking quality. Grafted.

GRAPES

	Doz.-lots	25-lots	50-lots	100-lots	1,000-lots
	Each	Each	Each	Each	Each
GRAPE, Concord35	.30	.25	.20	.15
Other Varieties40	.35	.30	.25	.20

Above prices for 2-year No. 1 vines. Orders for 100 or more 1-year, No 1 grape vines, 20 per cent discount from above prices.

AMERICAN VARIETIES (Hardy)

(Varieties are listed in order of ripening.)

- Fredonia (Black)** — New early grape. Berries large, round, hang well, fine flavor.
- Portland (White)** — Berries sweet, juicy, fine flavor. Productive and hardy.
- Campbell's Early (Black)** — Large, sweet, juicy, good.
- Island Belle (Black)** — Large, early, good west of the Cascade mountains.
- Niagara (White)** — Large bunches and berries, the standard white grape, called "White Concord."
- Worden (Black)** — Earlier, sweeter and larger than Concord.
- Caco (Red)** — New, exceptional merit. Wine-red, compact bunch, good size, hardy, thrifty grower.
- Concord (Black)** — The standard black, everywhere; very productive.
- Agawam (Red)** — Large, thick skin, sweet.
- Catawba (Red)** — Large, dark copper, rich musky flavor, late, wine grape of Ohio.

EUROPEAN VARIETIES (Medium Hardy)

- Csaba (Pearl of Csaba)** — Hardy, north European grape, white, small seeds, excellent table grape, good wine grape. Ripens early. New introduction. Has withstood over 30 degrees below zero without winter damage.
- Malaga (White)** — Very large bunches, good shipper.
- Ribier (Black)** — Largest, new, very fine.
- Black Hamburg (Black)** — A great favorite, large.
- Muscat (White)** — Muscat flavor; excellent.
- White Sweetwater (White)** — Medium size, sweet, rich flavor, early.
- Thompson Seedless (White)** — Seedless, small, sweet, good drier.
- Flame Tokay (Red)** — Large, a favorite, one of the best.
- Zinfandel (Black)** — The most famous wine grape, enormous quantity of compact bunches, very juicy, sweet.
- Alecante Bouschet (Red)** — Sweet, bright red juice. A wonderful wine grape — even the leaves turn brilliant red in the fall.

BERRIES

No home garden is complete without berry plants. Easily grown and profitable as well.

HYBRID BERRIES

	Doz.-lots	25-lots	50-lots	100-lots	1,000-lots
YOUNGBERRY)					
BOYSENBERRY)	3.00	5.00	7.50	12.50	100.00
DEWBERRY)					
LOGANBERRY)	2.40	4.00	7.00	12.00	80.00

Boysenberry — Recent introduction. Berries very large and of fine flavor. Considered by many superior to Youngberry.

Youngberry — Recent introduction, very fine, cross between Loganberry and Dewberry.

Loganberry — Very large fruit, strong grower, trailing vines.

BLACKBERRIES

	Dozen	Per 25	Per 50	Per 100	Per 1,000
BLACKBERRY, Thornless	3.50	7.00	12.50	20.00	150.00
Other Varieties	2.50	4.00	7.00	12.00	80.00

Evergreen — Large, delicious, bears from July to November.

Lawton — Well-known market variety.

Mercereau — Hardy, upright stocky canes, heavy producer, sweet.

Himalaya Giant — Vigorous grower, must be trellised.

Snyder — Very hardy, productive, medium size, early.

Rathbun — Strong, erect grower, compact bush, good quality.

Thornless — No thorns, trails, train on trellis, good.

RASPBERRIES

	Doz.	25	50	100	1000-lots-
RASPBERRY, Colombian, St. Regis, Golden Queen, Latham, and Chief	2.50	4.00	7.00	12.00	80.00
Other Varieties	2.00	3.50	6.00	10.00	65.00

Chief — New red — very fine.

Columbian (Purple Cap) — Dark red, unexcelled for canning, jelly, jam.

Cumberland (Black Cap) — One of the best and largest.

Cuthbert (Red) — Standard market variety, favorite.

Latham (Red) — New, disease resistant, very productive, large.

St. Regis (Red) — Everbearing, fine quality.

CURRANTS

(Sold in State of Washington Only)

	Each	Each	Each	Each	Each	Each
CURRENT, Perfection	.40	.35	.30	.25	.20	.16
Other Varieties	.35	.30	.25	.20	.15	.12½

Cherry — Red, large, good.

White Grape — Large, golden green.

Perfection — Red, finest and largest known.

GOOSEBERRIES

(Sold in State of Washington Only)

	Each	Each	Each	Each	Each	Each
Oregon Champion	.35	.30	.25	.20	.15	.12½

Oregon Champion — Largest, best commercial variety, free from mildew.

STRAWBERRIES

(For Spring Delivery)

(25% with order, balance C. O. D. express or parcel post. No order accepted for less than 25 of a variety.)

STANDARD VARIETIES

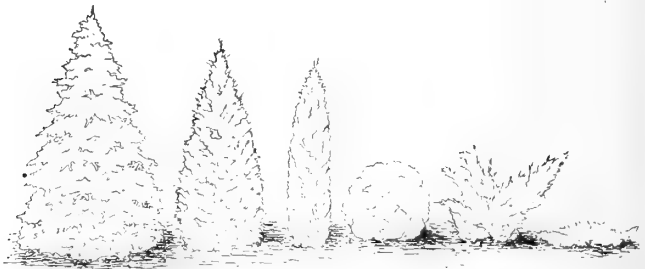
	Per 25	Per 50	Per 100	Per 1,000
Standard Varieties65	1.00	1.75	8.00
Clark Seedling (Hood River)—Large, firm, good shipper.				
Marshall—Large, good canner.				
Premier—Early, good quality, productive, favorite in Wenatchee valley.				
Dorsett—New, early, heavy bearer, large, good shipper.				
Fairfax—New, early, fine flavor, very firm.				

EVERBEARING VARIETIES

	Per 25	Per 50	Per 100	Per 1,000
Everbearing Varieties75	1.25	2.25	12.00
Gem—Heavy bearer, beautiful color and shape, delicious flavor and a firm market berry.				
Progressive—Medium size, sweet, fine quality.				
Mastodon—Largest, heavy bearer.				
Rockhill, Everbearing	1.50	2.75	5.00	35.00
One of the latest, improved everbearers. Does not grow runners. Excellent flavor, large size, heavy bearer.				

MISCELLANEOUS

	Each	Dozen	50	100
Rhubarb	\$.30	\$3.50	\$8.00	\$15.00
Horseradish15	1.50	6.00	10.00
Asparagus	—	.75	1.75	3.00
Hop Vines35	3.50	—	—



GROWING HABITS of Various Groups of EVERGREENS

- 1.— Fir; Norway Spruce; Colorado Green, Blue and Koster Spruce.
- 2.— Juniper Virginiaiana and J. cannarti; American Arbor Vitae.
- 3.— Irish Juniper, J. Virginiaiana Pyramidalis, Douglass Pyramidal Arbor Vitae, Pyramidal Arbor Vitae.
- 4.— Mugho Pine, Globe Arbor Vitae.
- 5.— Pfitzer Juniper, Juniper Sabina (Savin), J. Von Ehron, Dwarf Japanese Yew.
- 6.— Juniper sabina Tamariscifolia, J. Coast of Maine, Reeves Juniper, Andorra Juniper.

EVERGREENS

C. & O. Evergreens are well-grown, having good root systems and shapely tops. All Evergreens are balled and burlaped. Evergreens are sold f.o.b. Nursery, freight or express charges paid by the purchaser.

Washington State Tax — Add 2% Washington State Sales Tax on all orders for landscape material for delivery within the State of Washington.

	Size	Each
Abies Concolor (White Fir)	3-4 ft.	\$3.00
Also called Concolor Fir. Large growing, beautiful, stately tree. Soft blue color.	4-5 ft.	4.00
	5-6 ft.	5.00
Juniper Chinensis Pfitzeriana	18-24 in.	2.25
(Pfitzer's Juniper)	24-30 in.	2.75
J. excelsa stricta	15-18 in.	1.50
(Spiny Greek Juniper)		
J. communis Hibernica	3-4 ft.	2.50
(Irish Juniper)		
J. sabina (Savin Juniper)	18-24 in.	2.00
Dark green, semi-spreading.		
J. sabina tamariscifolia	15-18 in.	1.75
(Juniper Tamariscifolia)		
One of the finest creeping varieties. Dense, compact, blue-green.		
J. sabina Von Ehron	2 1/2-3 ft.	2.75
J. Virginiana (Eastern Red Cedar) {	2 1/2-3 ft.	2.50
Hardy, rapid grower.	3-4 ft.	3.25
J. Virginiana Ketteri	3-4 ft.	3.50
	4-5 ft.	5.00
J. Virginiana Pyramidalis	4-5 ft.	4.50
J. Virginiana Dundee	3-4 ft.	4.00
(Dundee Juniper)		
J. squamata meyeri	18-24 in.	3.00
(Meyer Juniper)		
Deep blue color, dwarf, irregular habit. Very striking.		
PICEA — SPRUCE		
Picea excelsa (Norway Spruce)	2 1/2-3 ft.	1.75
Rapid grower; excellent for wind-breaks and hedges. Can be sheared.	3-4 ft.	2.50
	4-5 ft.	3.25
	5-6 ft.	4.25
P. pungens	3-4 ft.	3.00
(Colorado Green Spruce).....	4-5 ft.	4.00
	5-6 ft.	5.00
P. pungens glauca	2 1/2-3 ft.	4.00
(Colorado Blue Spruce).....	3-4 ft.	6.00
	5-6 ft.	7.50
P. Kosteriana	2 1/2-3 ft.	6.00
(Koster Blue Spruce)	3-4 ft.	8.00
PINUS — PINE		
Pinus Mugho (Mugho Pine)	12-15 in.	1.75
	15-18 in.	2.25

EVERGREENS — (Continued)

	Size	Price Each
RETINOSPORA		
Retinospora filifera (Thread Retinospora)	2-3 ft.	\$3.00
R. filifera aurea nana..... (Dwarf Golden Retinospora)	{ 9-12 in. 12-15 in.	1.25 2.25
R. obtusa (Hinoki Cypress)..... Not hardy in severe climates. Bright green, distinctive foliage. Slow grower, long-lived. From Japan.	{ 3-4 ft. 4-5 ft.	4.00 6.00
THUJA — Arborvitae		
Thuja globosa (Globe Arborvitae) ..	{ 15-18 in. 18-24 in.	1.50 2.00
T. Lobbi aurea..... (Giant Golden Arborvitae)	3 1/2-4 ft.	3.25
T. occidentalis (American Arborvitae)	{ 2 1/2-3 ft. 3-4 ft. 4-5 ft.	1.75 2.50 3.25
T. occidentalis Pyramidalis..... (American Pyramidal Arborvitae)	{ 2 1/2-3 ft. 3-4 ft. 4-5 ft. 5-6 ft. 6-7 ft.	2.00 2.50 3.50 5.00 6.50
T. spiralis Douglasi pyramidalis (Douglas Pyramidal Arborvitae)	{ 3-4 ft. 3-4 ft. 5-6 ft.	2.50 3.25 4.25
T. Orientalis (Oriental Arborvitae)	{ 2 1/2-3 ft. 3-4 ft.	2.75 3.25
T. orientalis aurea nana..... (Berkman's Dwarf Golden Arborvitae)	{ 12-15 in. 15-18 in.	1.50 2.00
T. Beverleyensis (Golden Column Arborvitae)..... Stately column, pronounced golden color.	{ 3-4 ft. 4-5 ft.	3.25 4.00

Broad - Leafed EVERGREENS

Balled and Burlaped

Following Stock F. O. B. Wenatchee

Berberis Verruculosa	12-15 in.	1.25
Cotoneaster Horizontalis	18-24 in.	1.25
Daphne Cneoreum Spread	6-9 in.	1.00
Mahonia (Oregon Grape).....	{ 15-18 in. 18-24 in.	1.00 1.50
Pyracantha Lalandi (Firethorne)....	{ 2-3 ft. 3-4 ft.	1.50 1.75
Yucca75

SHRUBS — Balled and Burlaped

Following Shrubs F. O. B. Wenatchee

Azalea, Mollis	15-18 in.	1.50
Orange-red, early spring.		
Calluna vulgaris rubra.....	12-15 in.	.75
(Red Scotch Heather)		
Cotoneaster, Acutifolia	3-4 ft.	1.25
Simonsi	3-4 ft.	1.25
Divaricata	3-4 ft.	1.25
Daphne, Mezereum	15-18 in.	1.00
Lavender flowers, very fragrant.		
Dogwood (Cornus Florida rubra) {	2-3 ft.	2.50
Pink flowering, grafted.....	3-4 ft.	3.75
White flowering (Cornus Fla.)	3-4 ft.	2.25
Maple, Bloodleaf Japanese.....	{ 2-3 ft.	3.00
(Acer palmatum atropurpureum) {	3-4 ft.	3.75
Red Cut-leaf Japanese.....	18-24 in.	3.00
(Acer Dissectum Atropurpureum)		

Shade and Ornamental Trees

Washington State Tax: Add 2 per cent Washington State Sales Tax on all orders for landscape material for delivery within the State of Washington.

QUANTITY DISCOUNT on Shrubs and Vines:

Dozen Rate: 1-6 less than "Each" rate.

Example: A shrub costing 75c — 12 @ \$7.50.

Special Rates on 50, 100, and larger quantities.

	Size	Each
Ailanthus (Tree of Heaven).....	6-8 ft.	\$1.00
	8-10 ft.	1.25
Ash, Green	6-8 ft.	1.25
	8-10 ft.	1.50
Ash, Mountain—See Mountain Ash.		
Birch, European White.....	5-6 ft.	1.00
(Betula Alba)	6-8 ft.	1.25
	8-10 ft.	1.50
Birch, Weeping—See Weeping Trees.		
Box-Elder	6-8 ft.	1.00
	8-10 ft.	1.25
Box-Elder, Silver, variegated.....	6-7 ft.	2.00
Catalpa Speciosa	6-8 ft.	1.00
(Western Catalpa)	8-10 ft.	1.25
Catalpa Bungei (Umbrella Catalpa)	6-7 ft.	2.00
	3-4 ft.	1.25
Chestnut, White Flowering.....	4-5 ft.	1.50
	6-8 ft.	2.50
	4-5 ft.	2.50
Chestnut, Pink Flowering.....	5-6 ft.	3.00
Cherry, Japanese Flowering,	3-4 ft.	1.00
Kwanzan	4-5 ft.	1.25
Cherry, Japanese Weeping — See Weeping Trees.		
Crab, Bechtels, double, pink.....	2-3 ft.	.75
	3-4 ft.	1.00
Crab, Floribunda	4-5 ft.	1.25
Single, rose-colored.	5-6 ft.	1.50
Crab, Scheideckeri	4-5 ft.	1.25
Single, pink.	5-6 ft.	1.50
Crab, Sargent's Dwarf White.....	2-3 ft.	1.25
Elm, American	6-8 ft.	1.00
	8-10 ft.	1.50
Elm, Cork Bark.....	4-5 ft.	1.50
Elm, Moline	6-8 ft.	1.25
	5-6 ft.	.75
Elm, Siberian or Chinese.....	6-8 ft.	1.00
	8-10 ft.	1.25
	10-12 ft.	1.75
Ginkgo Biloba (Maidenhair).....	4-5 ft.	2.00
Hawthorne, Paul's Scarlet.....	6-8 ft.	1.75
Hawthorne, Pekin, white flowered (Chinese Hawthorne)	4-6 ft.	1.50
Linden, American (Basswood).....	6-8 ft.	1.50
(Tilia Americana)	8-10 ft.	1.75
Linden, European	5-6 ft.	1.50
(Tilia Cordata)	6-8 ft.	1.75
	5-6 ft.	.60
	6-8 ft.	.75
Locust, Black	8-10 ft.	1.00
	10-12 ft.	1.50
	Cal. 2-2 1/2 "	2.25

SHADE and ORNAMENTAL TREES — (Continued)

	Size	Each
Locust, Globe, 6-7 ft. heads.....	{ 1-1 1/4 in.	2.00
	{ 1 1/4-2 in.	2.50
	{ 2-3 in.	3.50
Locust, Honey	{ 6-8 ft.	1.00
	{ 8-10 ft.	1.50
Locust, Rose or Moss.....	5-6 ft. head	2.50
Locust, Pink Flowering.....	{ 5-6 ft.	1.25
	{ 6-8 ft.	1.75
	{ 8-10 ft.	2.25
Maidenhair—See Ginkgo Biloba.		
Maple, Norway	{ 5-6 ft.	1.00
	{ 6-8 ft.	1.25
	{ 8-10 ft.	1.50
	{ 10-12 ft.	1.75
	{ Cal. 1 1/2-2"	2.50
(Acer Platanoides)		
Norway Globe	6-7 ft.	2.00
Red (Acer rubrum).....	{ 5-6 ft.	1.25
	{ 6-8 ft.	1.75
Schwedleri (A. schwedleri).....	{ 6-8 ft.	1.50
	{ 8-10 ft.	1.75
	{ 10-12 ft.	2.25
Silver (or Soft).....	{ 6-8 ft.	1.00
	{ 8-10 ft.	1.25
(A. dasycarpum)		
Sugar (A. saccharum).....	{ 5-6 ft.	1.25
	{ 6-8 ft.	1.75
Sycamore (Maple)	{ 6-8 ft.	1.75
	{ 8-10 ft.	2.25
(A. pseudoplatanus)		
Maple, Japanese Bloodleaf — See "Balled Shrubs."		
Morus tartarica — See Russian Mulberry.		
Mountain Ash, European.....	{ 5-6 ft.	1.25
	{ 6-8 ft.	1.50
(sorbus aucuparia)		
Mulberry, Russian (Morus tartarica) {	6-8 ft.	1.25
	8-10 ft.	1.50
Mulberry, American	6-8 ft.	1.25
Plane Tree—See Sycamore.		

FLOWERING PEACH

Prunus persica Camelliaflora.....	3-4 ft.	1.00
(Camellia double pink Peach)		
Bright pink, double flowers. Choice		
P. persica Burbank Pink.....	4-5 ft.	1.00
(Burbank Pink Peach)		
A choice, double, pink-flowered peach.		
P. persica Burbank White.....	4-5 ft.	1.00
(Burbank White Peach)		
An attractive, double, white-flowered variety.		
P. Davidiana rosea.....	{ 3-4 ft.	1.00
	{ 4-5 ft.	1.25
(Pink Chinese Peach)		
A large growing tree, earliest to bloom in spring. Mass of bloom.		

SHADE and ORNAMENTAL TREES — (Continued)

FLOWERING PLUMS

	Size	Each
Prunus Bliricana	} 3-4 ft. 4-5 ft.	1.00 1.25
(Purple Leaf Plum)		
Blossoms semi-double, rich, soft pink. Foliage deep red to purple.		
P. Cistena	3-4 ft.	1.00
(Hansen's Purple Sand Cherry)		
Pink, single flowers. Red foliage.		
P. Triloba (Dwarf Flowering Plum) }	3-4 ft. 4-5 ft.	1.00 1.25
Beautiful dwarf tree or shrub. Rich, rose-pink, double flowers. Known as Rose Tree of China.		
<hr/>		
Poplar, Bolleana	} 8-10 ft. 10-12 ft.	1.00 1.50
Poplar, Carolina		
Poplar, Lombardy	} 5-6 ft. 6-8 ft.	.50 .75
Poplar, Silver		
Russian Olive	} 5-6 ft. 6-8 ft.	1.00 1.25
(Elaeagnus angustifolia)		
Red Bud (Cercis canadensis)	5-6 ft.	1.25
Siberian Pea Tree	6-8 ft.	1.00
(Caragana arborescens)		
Sycamore (Platanus or Plane Tree)		
American (P. occidentalis).....	} 6-8 ft. 8-10 ft.	1.50 1.75
Tulip Tree (Liriodendron)		
Willow, Golden	5-6 ft.	.75
Golden yellow twigs and bark.		
Willow, Weeping—See Weeping Trees.		

WEeping TREES

Birch, Cut-leaf Weeping	} 5-6 ft. 6-8 ft.	1.50 2.00
(Betula laciniata)		
Cherry, Japanese Weeping Flowering	6-ft. heads	2.75
(Double Pink Flowers)		
Peach, Weeping Flowering	6-ft. heads	2.50
(Prunus persica pendula)		
Willow, Niobe Golden Weeping	6-8 ft.	1.00
Golden bark and twigs.		
Willow, Wisconsin Weeping	} 5-6 ft. 6-8 ft. 8-10 ft.	.75 1.00 1.25
Long, drooping, graceful branches.		
Fast Grower.		

LET US HELP YOU

—PLAN and PLANT a Beautiful Garden!

Whether your home be small or large . . . a selection of Trees, Flowering Shrubs, Evergreens, Roses and Vines will bring beauty and enjoyment.



Landscaping increases property values, too!

We will GLADLY help you.

WRITE US!

FLOWERING SHRUBS

Our shrubs are Number One Grade and at least two years old. They have been transplanted and have excellent root systems and symmetrical tops. Most of this stock will bloom the first year planted.

QUANTITY DISCOUNT on Shrubs and Vines:

Dozen Rate: 1-6 less than "Each" rate.

Example: A shrub costing 75c — 12 @ \$7.50.

Special Rates on 50, 100, and larger quantities.

	Each
Althea, Red Pink, White Purple.....	\$1.00
Azalea Mollis — See "Shrubs—Balled & Burlaped."	
Almond, Flowering. Pink, white.....	.75
Barberry, Thunbergii, Japanese Green.....	.50
Red Leaved75
True-Hedge Columberry (Plant Pat. No. 110)75
Beauty Bush — See Kolkwitzia.	
Butterfly Bush, Ile de France (Buddleia).....	.75
Button Bush (Cephalanthus occidentalis).....	.75
Calycanthus, Floridus (Sweet Scented Shrub).....	.75
Coralberry (Symphoricarpos vulgaris).....	.60
Chenaulti.60
An improved Coralberry, small leaves, graceful arching branches, pink flowers, red fruit.	
Cornus (Dogwood) —	
*Florida, White Flowers (Small Tree).....	
*Florida Rubra, Pink Flowers (Small Tree).....	
*For above two varieties see "Shrubs Balled and Burlaped."	
Cornus —	
Elegantissima Variegated, silver leaves.....	.85
Lutea (Yellow Twig) Shrub, yellow bark.....	.75
Siberica (Red Twig) Shrub, red bark.....	.75
Cydonia Japonica — See Quince, Japanese.	
Deutzia —	
Gracillis. White flowers, May.....	.75
Lemoine. White flowers, May, June.....	.75
Pride of Rochester. White, tinged pink. June.....	.75
Dogwood — See Cornus.	
Forsythia —	
Fortunei — Upright, bright yellow flowers....	.75
Intermedia Spectabilis. Showy Border Forsythia75
Suspensa Weeping Forsythia. Yellow flowers..	.75
Heather — See Caluna Rubra under "Shrubs — Balled and Burlaped."	
Honeysuckle (Lonicera), Upright Bush.	
Fragrantissima. Early, sweet-scented, cream....	.75
Tartarian, Pink, Red.....	.75
Hydrangea —	
Arborescens. White, June-July.....	.75
Paniculata Grandiflora (P. G.).....	.75
White, bronze-pink. August, Sept.	
Hypericum (St. Johnswort) —	
Henryi (Japanese Hypericum) Yellow flowers..	.75
Jetbead (Rhodotypus kerriodes) White Kerria.....	.75
Kerria, Japonica. Yellow. Double flowers.....	.75
Kolkwitzia amabilis (Beauty Bush).....	1.00
Slender, graceful arching branches covered with pink flowers, late spring.	

FLOWERING SHRUBS — (Continued)

	Each
Lilacs (Syringa) —	
Purple, Common (<i>vulgaris</i>). Purple flowers.....	.75
White, Common (<i>vulgaris</i>). White flowers.....	.75
Persian (<i>persica</i>). Large spikes.....	1.00
Purple-lilac flowers.	
Budded Lilacs —	
Charles Jolly. Double. Dark violet.....	1.25
Charles X. Single. Reddish-purple.....	1.25
Congo. Single. Wine-red.....	1.25
Ludwig Spaeth. Single. Purplish-red.....	1.25
Marie LeGraye. Single. Pure White.....	1.25
Villosa. Pale lilac. Late bloomer.....	1.25
Lonicera — See Honeysuckle.	
Mock Orange — See Philadelphus.	
Ninebark — See Physocarpus Opulifolius.	
Philadelphus (Mock Orange) —	
Coronarius (Sweet Mock Orange).....	.75
Lemoine. White.....	.75
Virginal White, very fragrant.....	.75
Physocarpus Opulifolius (Ninebark).....	.75
Green spreading shrub, double white flowers, June, attractive seed pods.	
Opulifolius nana.....	.75
Prunus Triloba.....	1.00
Shrub or dwarf tree.....	} 3-4 ft. 1.00
Deep rose, double flowers.....	} 4-5 ft. 1.25
Quince, Flowering (Cydonia Japonica) —	
Japanese. Deep red, early spring.....	.85
Maulei, Dwarf, Orange-red. Low growing.....	.75
Rhodotypus kerriodes — See Jetbead.	
Rhus — See Sumac.	
Snowball — (See Viburnum opulus sterile.	
(See Viburnum plicatum.	
Spiraea —	
Anthony Waterer. Low grower, red flowers.....	.75
Arguta (Garland Spiraea). Tall grower, white.....	.75
Spiraea Froebeli — Similar to S. Anthony Wat- erer, though taller.....	.75
Prunifolia (Bridalwreath). White flowers.....	.75
Thunbergi, Feathery foliage, white flowers.....	.75
Korean Spiraea (<i>trichocarpa</i>).....	.75
Van Houttei. White. An old favorite.....	.75
Stephandra flexuosa. White flowers.....	.75
Foliage colors with seasons.	
Snowberry (Symphoricarpos racemosus).....	.60
Sumac (Rhus) —	
Staghorn Sumac (<i>rhus typhina</i>).....	1.00
Sweet Shrub — See Calycanthus floridus.	
Syringa — See Lilac.	
Tamarix —	
African. Drooping, feathery foliage.....	.75
Pink flowers.	
Hispidia. Upright, bluish-green foliage.....	.75
Pink flowers.	
Viburnum, Carlesi (balled in moss).....	1.75
A new attractive shrub, flowers delicate pink, fragrant.	
Dentatum (Arrowwood), white, May-June.....	.85
Lantana (Wayfaring-tree). White, May-June.....	.85
Opulus (European Highbush Cranberry).....	.85
Flat heads, white flowers, May-June. Red berries in fall.	
Opulus Sterile (Common Snowball).....	.85
Showy, round, ball-like white flowers, May-June.	
Plicatum (Japanese Snowball).....	.85
Showy white flowers in balls, June. Handsome foliage, autumn coloring.	
Tomentosum. Flat heads, white flowers, June.....	.85

FLOWERING SHRUBS — (Continued)

Weigelia —

Eva Rathke. Deep red, low growing.....	.75
Floribunda. Light red, strong grower.....	.75
Rosea. Very fine, deep rose.....	.75
Variiegated. Pink flowers, silver leaves.....	.75

Yucca — See "Balled Broad-Leaf Evergreens"

HEDGE PLANTS

	25	50	100
Arborvitae, American	\$10.00	\$18.75	\$35.00
Makes a dense evergreen hedge, beautiful year around. Can be sheared.			
Barberry, Thunbergii	5.00	8.00	15.00
Makes attractive hedge, 3-4 ft. Does not require trimming. Small, sharp thorns make good barrier.			
Barberry, Truehedge			
Columberry	10.00	18.75	35.00
(Plant Patent No. 110.)			
Caragana Arborescens —			
(Siberian Pea Tree)	3.25	6.00	10.00
Exceedingly hardy and drouth-resistant. Attractive yellow flowers in spring. Ideal for windbreak or screen.			
Privet, English —			
18 to 24-in.....	4.00	7.00	12.50
2 to 3 ft.....	5.00	8.50	15.00
3 to 4 ft.....	7.00	12.00	22.00
Privet, Lodense	5.00	9.00	17.00
Dwarf, compact grower, excellent for low-growing hedges, borders.			
Spirea, Van Houtei	5.00	8.00	15.00
Spruce, Norway	10.00	18.75	35.00
Ideal where a tall, thick-growing hedge or screen is desired. Can be sheared. Makes excellent windbreak.			

VINES AND CREEPERS

Our vines and creepers are all two or more years of age, No. 1 grade. Dozen rate one-sixth less than each rate.

Bignonia — See Trumpet Vine.

Celastrus, Scandens (American Bittersweet)	\$1.00
Clematis —	
Jackmani, large purple flower	1.25
Paniculata, small white flowers, fall75
Ramona, large blue flowers	1.25
Texensis, bell-shaped, bright red flowers	1.25
Euonymus Radicans Vegetus, deep green, evergreen	1.00
Euonymus Radicans Variegated, silver, evergreen	1.00
Euonymus Radicans Colorata, silver, evergreen	1.00
Honeysuckle, Scarlet Trumpet, bright scarlet75
Hall's Japan, cream and white, very fragrant ..	.75
Gold Flame, new, rare, very showy85
Ivy, Boston, green leaves, clings to wood or stone75
Engleman's Creeper, green leaves, very hardy75
Virginia Creeper, green leaves, red in fall75
Silver Lace Vine (Polygonum Auberti)75
Trumpet Vine (Bignonia), orange-red flowers75
Wisteria (Sinensis)	
	} Blue 1.00
	} White .. 1.00

PEONIES

Peonies thrive in any good garden soil, where sunlight is plentiful. Once established, they flower year after year with increasing quantity and quality of gorgeous blossoms. This list contains some of the most highly rated peonies according to the rating of the American Peony society, as well as the most valuable of the old popular varieties.



<u>Rating</u>	<u>Peony Varieties</u>	<u>Price—Each</u>
9.0	Baroness Schroeder , shell pink bud; opens white	\$.75
7.7	Dorchester Hydrangea , pink, late.....	.50
6.1	Duchess de Orleans , light salmon pink....	.35
8.1	Duchess de Nemours , white, sulphur yellow center50
7.8	Duke of Wellington , creamy white.....	.35
7.6	Edulis Superba , early, deep pink.....	.35
8.4	Felix Crousse , brilliant red.....	.50
9.3	Festiva Maxima , large white-flecked crimson.50
7.5	Floral Treasure , rich pink and salmon....	.50
7.3	Golden Harvest , salmon pink and gold....	.50
8.8	Karl Rosenfield , rich red, excellent cut flower.60
9.8	Kelways Glorious , creamy white, with soft pink blush.....	3.00
9.9	La Cygne (The Swan) , pure white, high- est rated peony.....	3.00
9.0	La France , large, clear bright pink.....	1.50
7.7	L'Eclatante , deep velvety crimson.....	.35
7.9	Mme. D. Verneville , popular early white cut flower.35
9.2	Mme. Jules Elie , shell pink, silvery reflex	.75
9.4	Mme. Jules Dessert , delicate shell pink....	1.50
8.8	Mons. Martin Cahouzac , darkest red peony.	1.50
	Officinalis Rosea , earliest pink.....	.60
	Officinalis Rubra , earliest red.....	.60
9.2	Phillippe Revoire , highest rated red, late mid-season.	2.50
7.7	Philomele Tricolor , the gypsy color peony.	.60
8.6	Primavere , sulphur yellow, the yellow peony.	1.50
8.8	Richard Carvel , the best early red.....	1.50
9.8	Therese , soft shell pink.....	2.00
7.9	Van Dyke , multi-colored.....	.60
9.3	Walter Faxon , large vivid pink, a superb peony.	1.50

SINGLE PEONIES

Duchess of Portland , rich pink and flesh..	1.25
Snow Wheel , pure white, yellow center....	1.00
Mikado , red, yellow center.....	1.25

Orders for \$3.00 or over will be post-paid. Prices subject to 2 per cent sales tax in Washington State. The dozen rate price, 1-6 off the each rate, will apply on 6 or more peonies of any varieties.

ROSES

Orders for \$3.00 or over will be post-paid.

Lots of 12 roses.....1/6 off the 'Each' price.

American Beauty — Hardy old favorite red.....	\$.50
Angele Pernet — Coppery orange and yellow.....	.50
Autumn — Rich burnt orange, yellow and red.....	.50
Betty Uprichard — Large two-tone pink, profuse....	.50
Caledonia — Long buds, large white flowers.....	.50
Cecil — Large single, buttercup yellow.....	.50
Christopher Stone — New. One of the best red roses. Glowing brilliant crimson-scarlet with deeper shadings, long buds, good foliage.....	1.00
Condesa de Sagtogo —Coppery pink, golden yellow reverse.50
Countess Vandal (Plant Patent) — Long, pointed buds, carmine pink, shaded soft pink and gold..	1.00
Catalonia — Brilliant, orange vermillion.....	.75
Dainty Bess — Single soft rose pink.....	.50
Duquese de Peuaranda — Blend of apricot-orange and pink.75
Eclipse (Plant Patent) — Long, streamlined bud, rich gold, a gold medal rose, a superb yellow....	1.25
Editor McFarland — Glowing pink, fine form and profuse.50
Etoile de Holland — Dark, velvety-red, large, fragrant, profuse.....	.50
E. G. Hill — Large, double, lasting, deep scarlet....	.50
Feu, Joseph Looymans — Shapely, long buds, apricot yellow.50
Frau K. Druschki —The grand old hardy white rose	.50
Gloaming (Plant Patent) — Satiny pink, salmon and amber base, excellent fragrant cutting rose	1.00
Golden Dawn — Very large, double, sunflower yellow.50
Gruss an Teplitz — Fiery-crimson, constant bloomer	.50
Hinrich Gaede — Long nasturtium-red buds, large orange-yellow flowers, an outstanding new rose	.75
Innocence — Long, tapering buds, single white, red stamens.50
Joanna Hill — Fine form, bud and flower Indian yellow.50
Kaiserin A. Victoria — The white rose of our ancestors and for our descendants.....	.50
Lafayette — Polyantha, brilliant cherry-crimson, continuous, and profuse bloomer.....	.50
Los Angeles — A glorious rich flame pink.....	.50
Lulu — Coral apricot, beautiful buds.....	.50
Max Krauss — Yellow bud, opening to rich yellow-gold. Strong grower, continuous bloomer. Long pointed buds.75
McGreedy's Ivory — Excellent form in cream bud and white flower.....	.75
Mary Hart (Plant Patent) — Deep blood red sport of the popular Talisman.....	.85
Matador (Plant Patent) — Scarlet-crimson with darker silky sheen.	1.00
Mme. Cecil Brunner (Polyantha) — Exquisite, tiny salmon pink buds.....	.50

ROSE LIST — (Continued)

Mme. Edward Herriott —Coral red to shrimp pink, profuse.50
Mme. Butterfly — Soft salmon pink.....	.50
Miss Rowena Thom — Immense flowers, bright pink, golden base.....	.50
Mrs. E. P. Thom — Pure yellow, a superb rose.....	.50
Mrs. P. S. DuPont — Free flowering, double, rich yellow.50
Mrs. Sam McGredy — Long coppery buds, orange rose blooms.75
Souer Therese — Chrome yellow, tinged carmine....	.75
President Hoover —Multi-colored, combines shades of cerise-pink, scarlet and yellow.....	.50
Signora (Plant Patent) — Long buds of warm, burnt sienna, opening to a lighter hue toward manderine.	1.25
Sunburst — Yellow-suffused orange.50
Talisman — A tri-color masterpiece, golden yellow, scarlet-orange.....	.50
Texas Centennial (Plant Patent) — Blood red, toning to cerise red.....	.50
Vesuvius — Glowing fiery crimson, almost single, orange stamens.50

CLIMBING ROSES

American Beauty Cl. — Large flowers, rose-red.....	.50
Blaze (Plant Patent) — Acclaimed the only hardy everblooming, scarlet climber. Propagated from blooming wood only.....	1.00
Chaplin's Pink Cl. — Resembles Paul's scarlet but clear pink.50
Dr. W. Van Fleet — Large, beautiful, flesh pink, strong grower, glossy foliage.....	.50
Golden Glow (Plant Patent) — Pure spectrum-yellow, hybrid tea-like flowers.....	1.50
Los Angeles Cl. — Sport of the popular bush Los Angeles.....	.50
Mme. Edouard Herriott Cl. — This climber displays the popular "Daily Mail" rose to perfection.....	.50
Mme. Gregorie Staechelin (Spanish Beauty) — Pearl-pink.50
Paul's Lemon Pillar — Creamy buds, beautiful, large, white flowers.....	.50
Paul's Scarlet Cl. — Large, vivid scarlet shaded with crimson.50
President Hoover Cl. — Sport of the popular multi-colored bush variety.....	.50

SHRUB ROSES

Austrian Copper — Coppery red and yellow, a brilliant shrub.50
F. J. Grootendorst — Red carnation-like flowers, glossy rugose foliage.....	.50
Hugonis (Golden Rose of China) — Early, single; clear, golden yellow.....	.50

GARDEN ACCESSORIES

(Prices F. O. B. Wenatchee)

VIGORO FERTILIZER

— Clean, Odorless, Economical.

100-lb. bag	\$3.50
50-lb. bag	2.30
25-lb. bag	1.40
10-lb. pkg.70
5-lb. pkg.45
1-lb. pkg.10

PEAT MOSS

Large bale	\$3.75
Sack85

LAWN SEED

C. & O. Lawn Mixture, per lb.	\$.60
Kentucky Blue60
Red Top60
White Lawn Clover	1.00
Creeping Bent	1.50

TREE PROTECTORS

25 or less	each 5c
25 to 50	each 4c
50 to 500	each 3c
500 up	each 2 1/2c

GAZING GLOBES

8-inch to 16-inch sizes (diameter). { Prices }
 Available with or without pedestals. { Furnished }

BIRD BATHS — SUN DIALS

Various sizes and designs..... ”

GARDEN SPRAYS



“EXTRAX” GARDEN SPRAY

Kills every type of insect from Aphids to Zimbs. Directions for use on all containers.

1 fluid oz. bottle	\$.35
16 fluid oz. bottle	2.50

(Makes 100 to 200 gals. of diluted spray.)

MILDEW SPRAY

Greenol Fungicide —

4 fluid oz. bottle	\$.60
--------------------------	--------

SCRAM — Dog Repellent

Discourages dogs. Keeps them from places they are not wanted. Also effective as a repellent for mice and other animals.

8-oz. can	\$.50
-----------------	--------

BUG-GETA—For Slugs and Snails

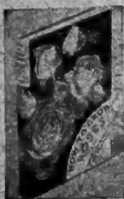
1-pound package	\$.25
-----------------------	--------

VITAMIN B-1

(Makes 2,000 gallons solution.) Grow the kind of flowers you've always wanted—stronger, healthier, more gorgeous blooms.

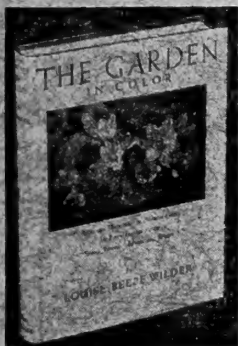
POPULAR GARDEN BOOKS

Our assortment of Garden and Horticultural books includes over 90 titles. We will gladly mail you a complete list of titles available.



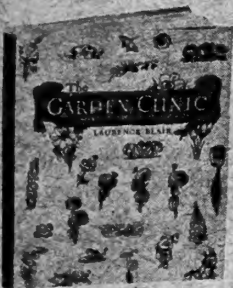
How To Grow Roses

The popular "how to do it" book on roses. Gives advice on how to use roses in the garden, prepare ground, plant, care for, pruning, etc. 72 illustrations (40 in color). Price \$1.00 (Postpaid).



The Garden in Color

In this book the garden comes to life in color. 320 color plates present fully 500 fine plants for your garden. Combination of magnificent colored pictures and complete directions for garden planning. Formerly \$7.50. Special price now \$2.95. (Postpaid)



The Garden Clinic

Every garden lover, amateur or expert, will appreciate and enjoy this practical book. Forty pages of drawings and illustrations showing how to plant, prune, spray, and handle most every garden problem. 145 pages packed with information—a helpful "tool." Price \$2.00. (Postpaid)



Garden Flowers in Color

Every time you plan a color scheme, border arrangements, or lay out flower beds, you will use this helpful book. Tells where and when to plant, soil preferences, plant descriptions, hardiness. Valuable garden authority. 400 full-color illustrations. 320 pages of text. Formerly \$3.75. Special price now \$1.98 (Postpaid).



A Garden for Every HOME

Few things cost so little and return so much as Trees, Flowering Shrubs, Vines, Roses and Evergreens about your home.

Properly selected Trees and Flowering Shrubs will bring continuous color and beauty, the year-around.

Good Trees and Shrubs are a wise investment. They grow and bloom — and last for many years. They increase property values.

Best of all — they make your home beautiful . . . more livable . . . and more enjoyable.

Let the C. & O. Landscape Department Help YOU!

Plant

THESE

*Better
Varieties!*

.. They Produce
More Dollars
Per Acre

HERB HALE PEACH
(U. S. Plant Pat. Pending)

REDELBERTA Peach
(U. S. Plant Pat. 232)

RILAND APRICOT
(U. S. Plant Pat. 74)

APPLES:—

BLACKJON
(Trade Mark Reg.)

BLACKMACK
(Trade Mark Reg.)

RICHARED Delicious
(Trade Mark Reg.)

SHOTWELL Delicious
(U. S. Plant Pat. 90)

SEEANDO Red Rome
(Trade Mark Reg.)

SEEANDO WINESAP
(Trade Mark Reg.)

These better varieties are making more money per acre for progressive fruit growers. Wise planting of better varieties is a "must" for successful fruit growing today. Write us for actual grower records — and per acre performance figures of these outstanding varieties.

Columbia & Okanogan Nursery Co.

C. & O. Bldg.

Wenatchee, Wash.

